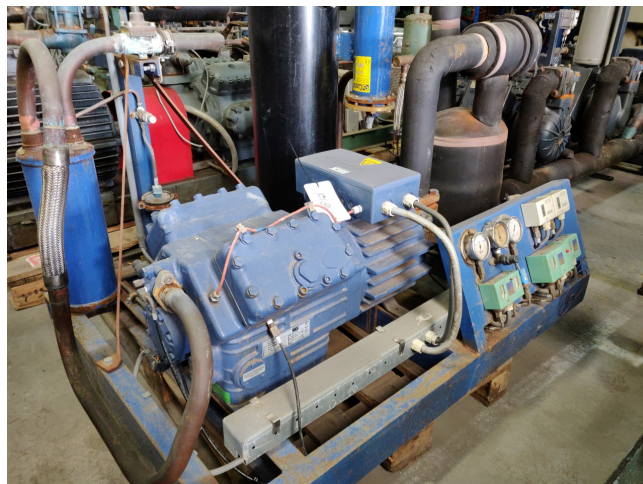


# Bock HGX5/945-4 S cool/freeze package

## Specifications

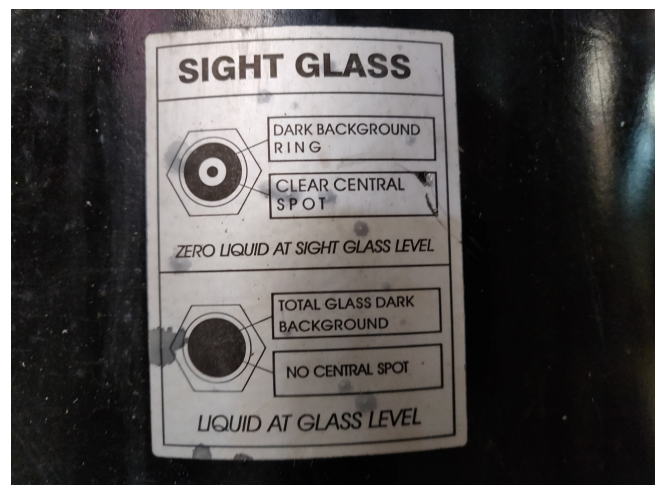
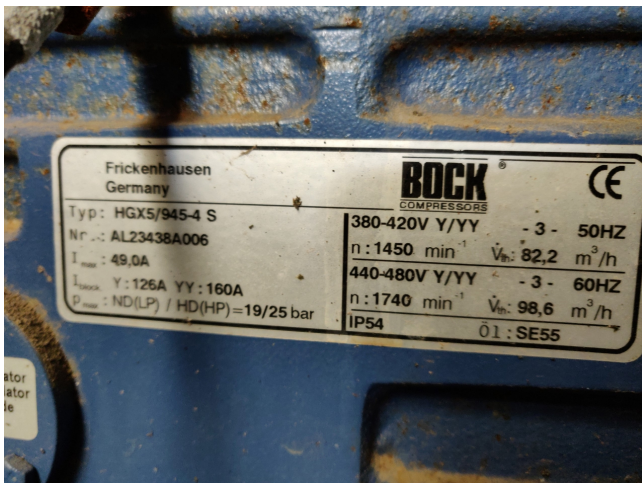
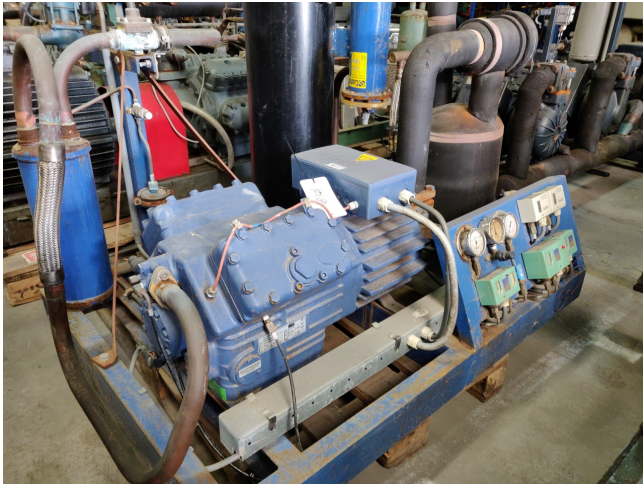
Brand	Bock
Type	HGX5/945-4 S cool/freeze package
Refrigerant	Freon
kW at 0°C/+40°C	65.30
kW at -5°C/+40°C	54.20
kW at -10°C/+40°C	44.50
kW at -20°C/+40°C	28.70
kW at -30°C/+40°C	17.10
On steel base frame	✓
Pressure safety switches	✓
Hp/Lp/Op	
Pressure gauges	✓
Hp/Lp/Op	
Liquid receiver	✓
Liquid receiver ltr.	30
Oil separator	✓
Sight Glass	✓
Remarks	Our capacity table is based on Manufacturer spec. We would like to know which refrigerant is in your system
Package / Rack	✓
Stock	1



## Description

### Used Bock HGX5/945-4 S cool/freeze package

Used cool/freeze package with a Bock HGX5/945-4 S reciprocating compressor consisting the following elements: Oil separator, pressure safety switches, pressure gauges, liquid receiver and a sight glass. \*Why choose for HOSBV? Were not only the largest used refrigeration specialist in Europe, but also, we deliver all equipment including an extensive test, warranty and industrial cleaning. Optional we can arrange the logistics.





## HGX5/945-4 S

Engine: 380-420V YYY -3- 50Hz PW  
Refrigerant: R404A, R507

GEA Commercial Compressors



### Subject:

### Performance data table

Application: Refrigeration & AC  
Reference temperature: Dew point  
Supply frequency: 50 Hz  
Voltage: 400 V  
Suction gas temperature: 20 °C  
Subcooling (outside cond.): 0 K

tc [°C]		to [°C]									
		10.0	5.0	0.0	-5.0	-10.0	-15.0	-20.0	-25.0	-30.0	
30.0	Q [W]		92000	77300	64400	53000	43100	34500	27200	20900	
	P [kW]		18.30	17.70	16.90	16.00	14.90	13.60	12.30	10.80	
	I [A]		31.70	30.80	29.60	28.20	26.60	24.90	23.10	21.40	
35.0	Q [W]		85000	71300	59300	48700	39600	31600	24800	19100	
	P [kW]		20.00	19.10	18.10	17.00	15.70	14.20	12.70	11.10	
	I [A]		34.30	33.00	31.50	29.70	27.80	25.80	23.70	21.70	
40.0	Q [W]		77900	65300	54200	44500	36000	28700	22500	17100	
	P [kW]		21.70	20.60	19.40	18.00	16.50	14.80	13.10	11.30	
	I [A]		37.10	35.40	33.40	31.20	28.90	26.60	24.20	21.90	
45.0	Q [W]		70900	59200	49000	40100	32500	25800	20100	15200	
	P [kW]		23.40	22.00	20.60	18.90	17.20	15.30	13.40	11.40	
	I [A]		39.90	37.70	35.30	32.70	30.00	27.30	24.60	22.00	
50.0	Q [W]		63700	53100	43900	35800	28900	22900	17700	13200	
	P [kW]		25.00	23.40	21.70	19.80	17.80	15.70	13.50	11.30	
	I [A]		42.80	40.10	37.20	34.10	31.00	27.90	24.80	22.00	
55.0	Q [W]		56500	47000	38700	31500	25200	19900	15200	11200	
	P [kW]		26.70	24.80	22.80	20.60	18.40	16.00	13.60	11.10	
	I [A]		45.60	42.40	38.90	35.40	31.80	28.30	24.90	21.80	